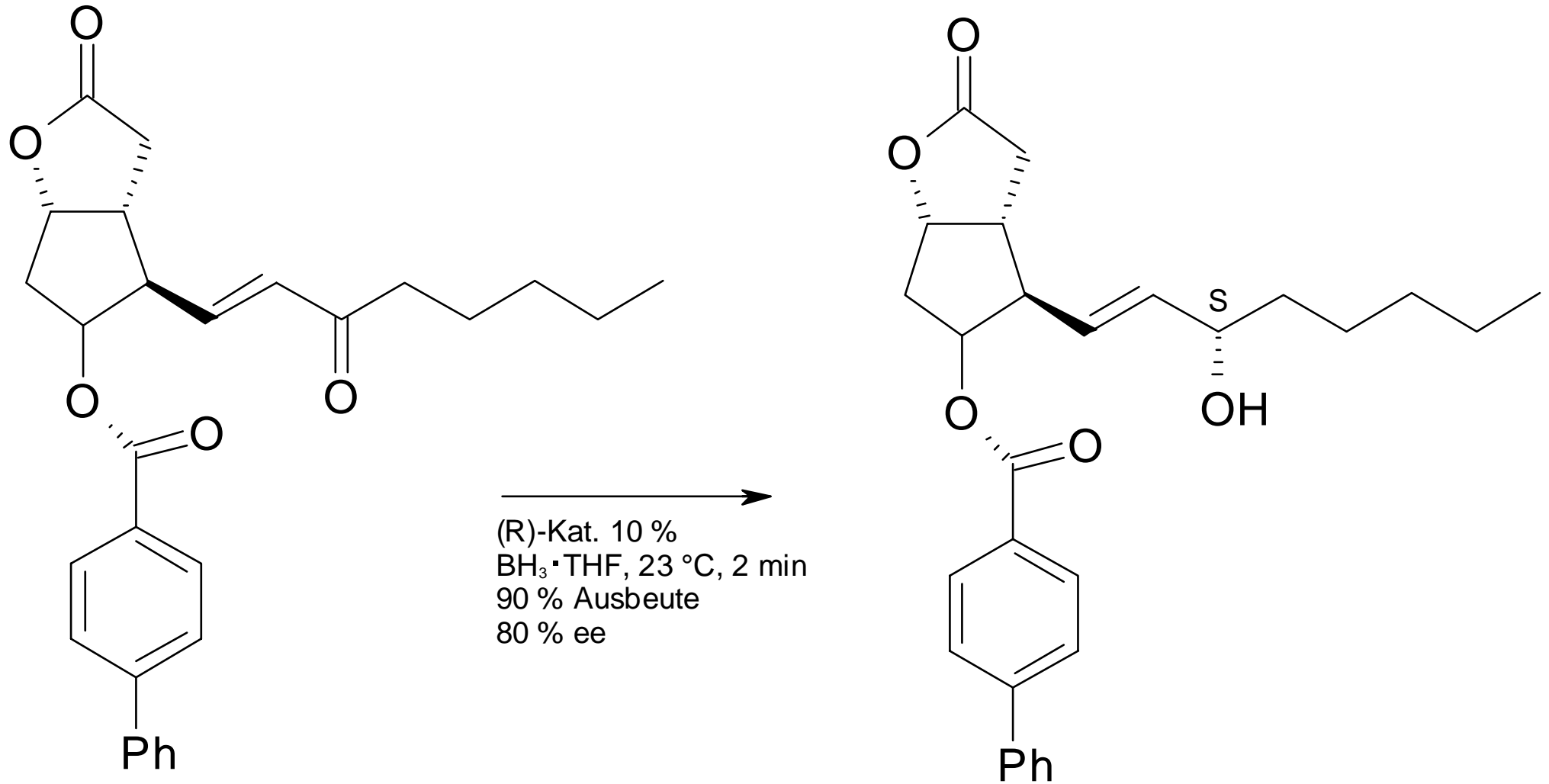
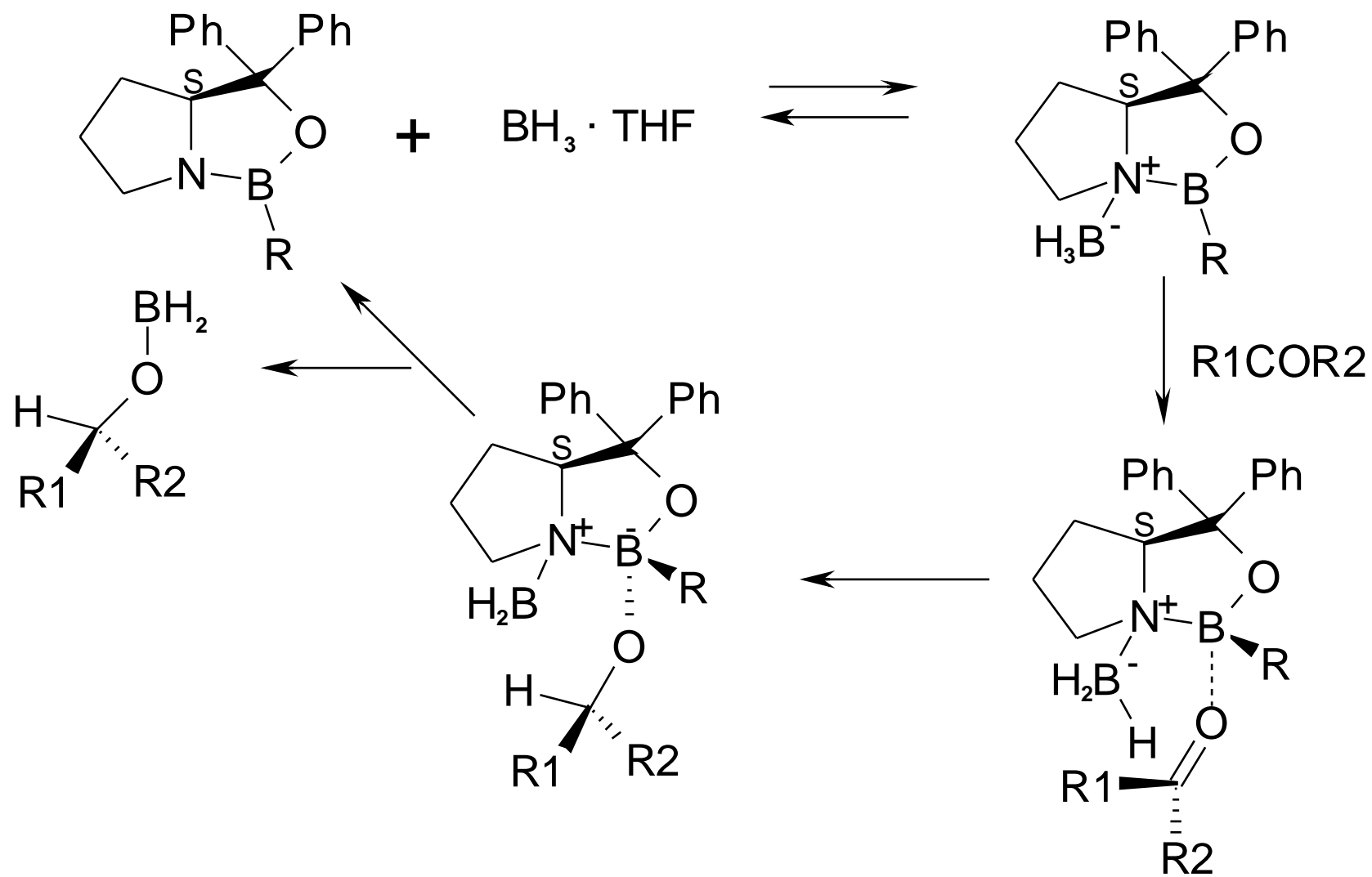


Prostaglandin-Synthese:



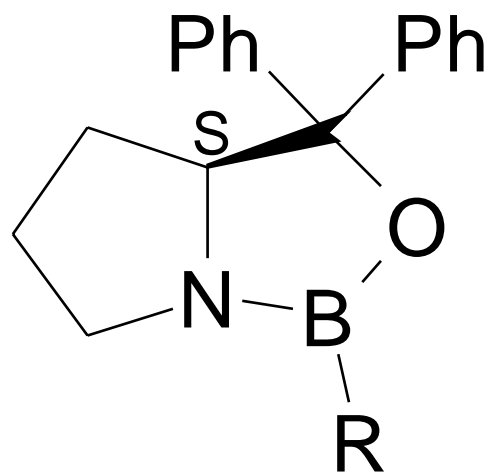
Mechanismus:



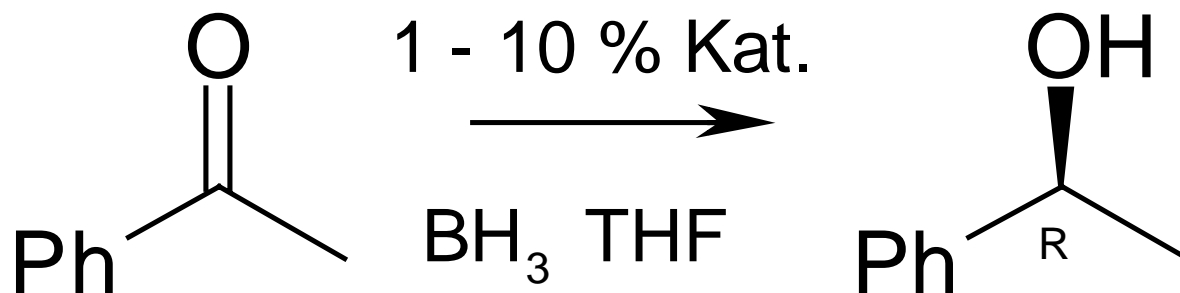
Enantiomerenüberschuss:

$$\% ee = 100 * \frac{x_R - x_S}{x_R + x_S}$$

Oxazaborolidine (Corey, Bakshi, Shibata)

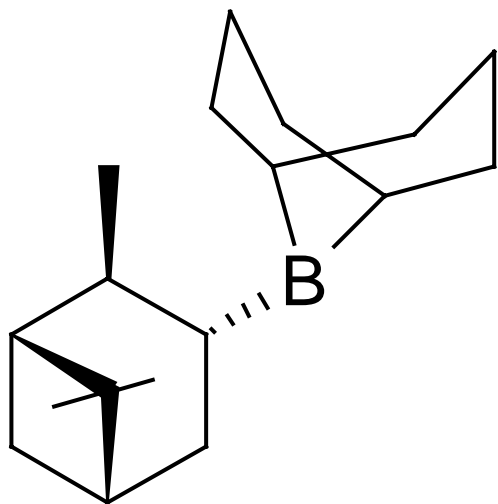


R = H, Me, Bu

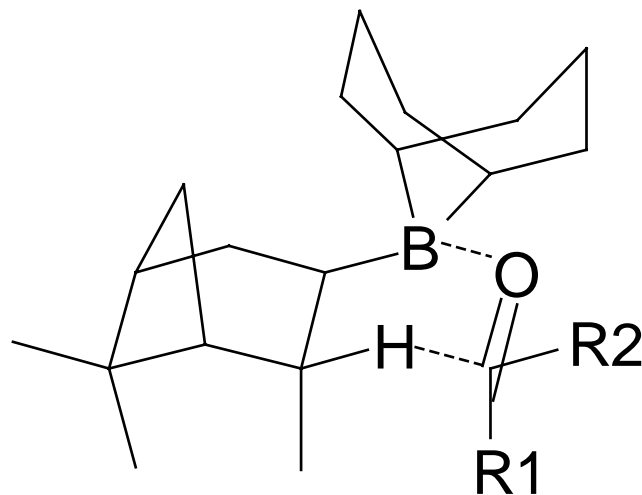


B-3-pinanyl-9-borabicyclo[3.3.1]nonan (Alpine-Boran)

(R)-

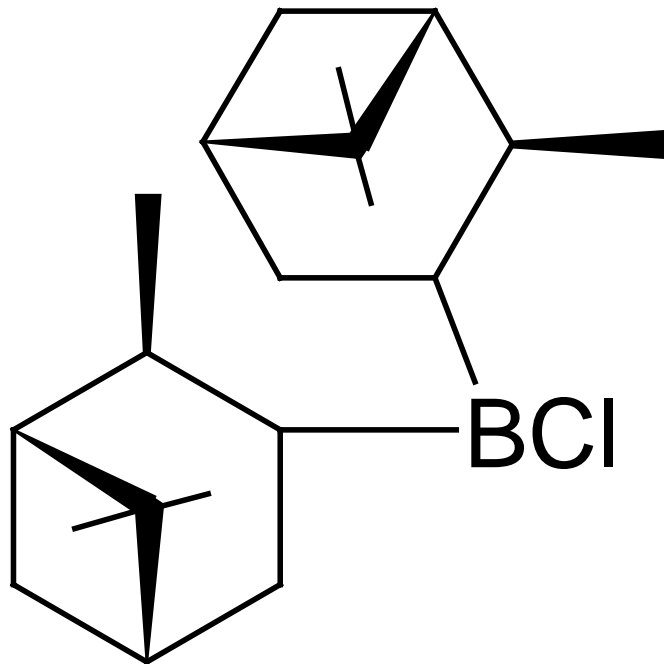


ÜZ:



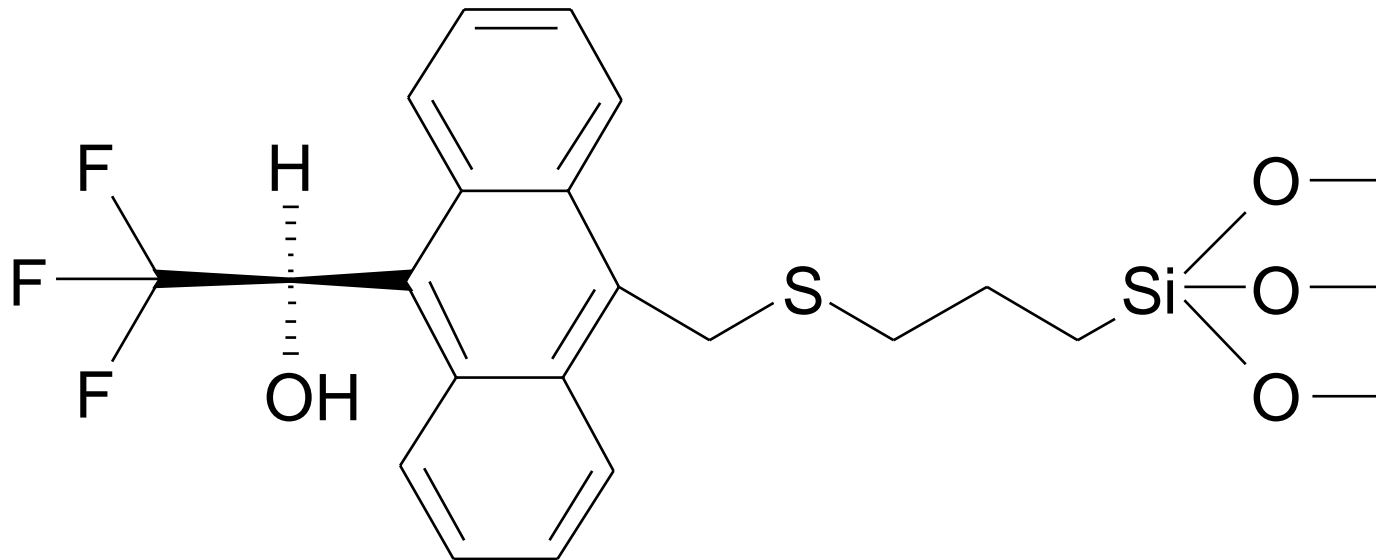
Chlorodiisopinocampheylboran (Ipc_2BCl)

(-)-



Bestimmung des Enantiomerenüberschusses:

- Drehwinkel
- Chromatographie



- NMR